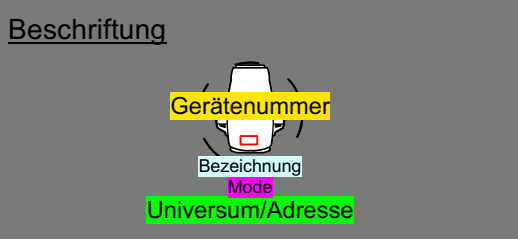
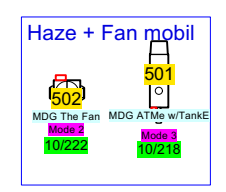
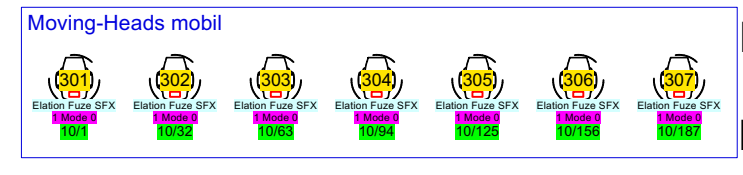


- Moving Light**
- Elation Fuze Profile @ 540 w LED 10
 - Elation Fuze SFX @ 432 w LED 30
 - Elation Fuze Wash FR @ 631 w LED 24
- Blinder**
- Elation DTW Blinder 700 @ 680 w LED 6
- Hazer&Fan**
- MDG The Fan w/Tank @ 715w 1
 - MDG The Fan @ 100w 1



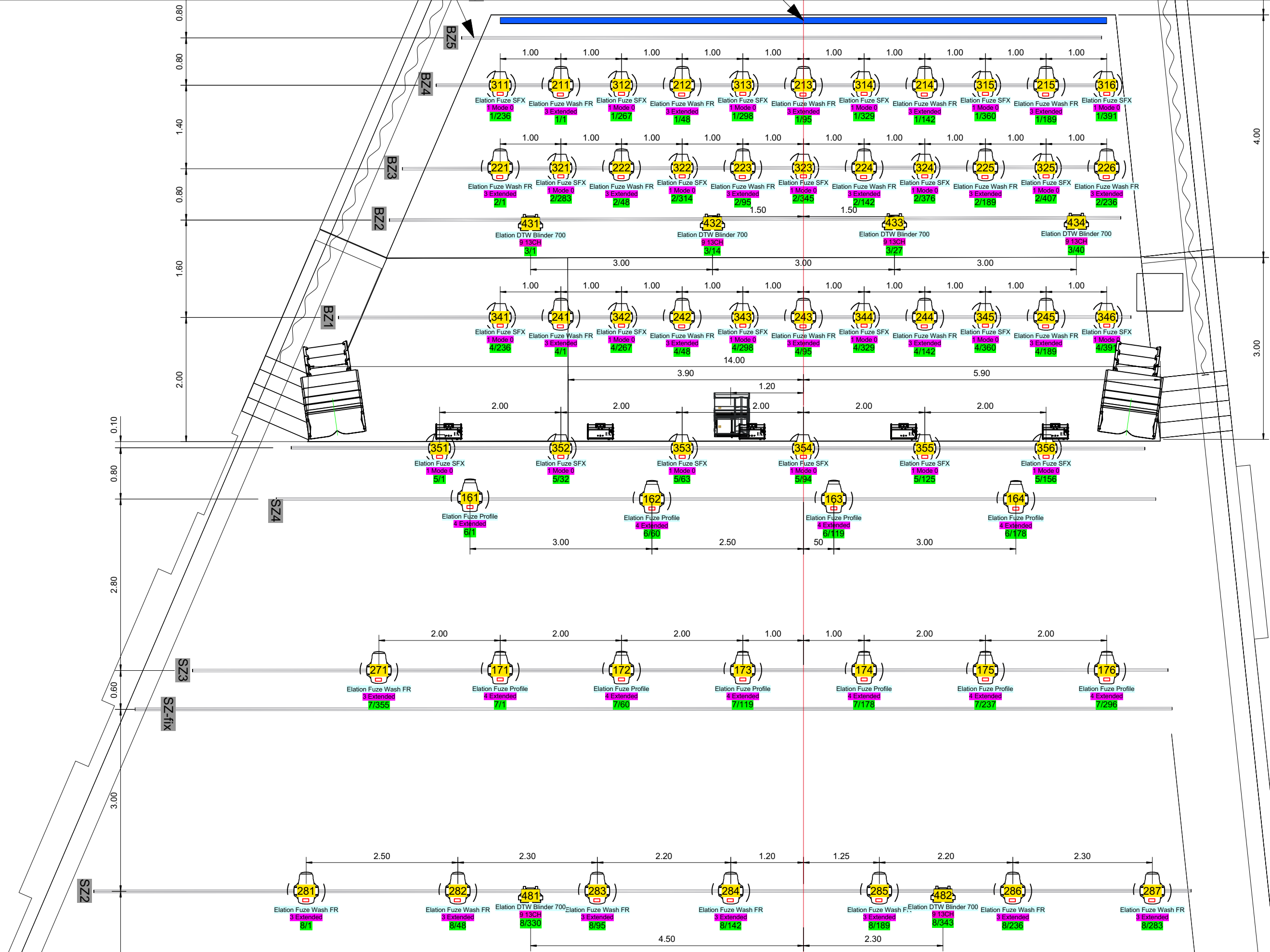
Referenzlinie
Mitte LED-Wand

Running with SACN.

IP-Adressen;

- MA3 Light Console ENTRA: 10.32.40.23
- Swisson DMX Node, XND-8: 10.32.40.24
- Swisson DMX Node, XND-8: 10.32.40.25
- Swisson DMX Node, XND-4B5: 10.32.40.28

ENTRA	Lightplot ENTRA	
	ENTRA AG Obere Bahnhofstrasse 56 8640 Rapperswil	M 1:75
	info@entra-rapperswil.ch +41 55 222 70 20	20.07.2023



ENTRA

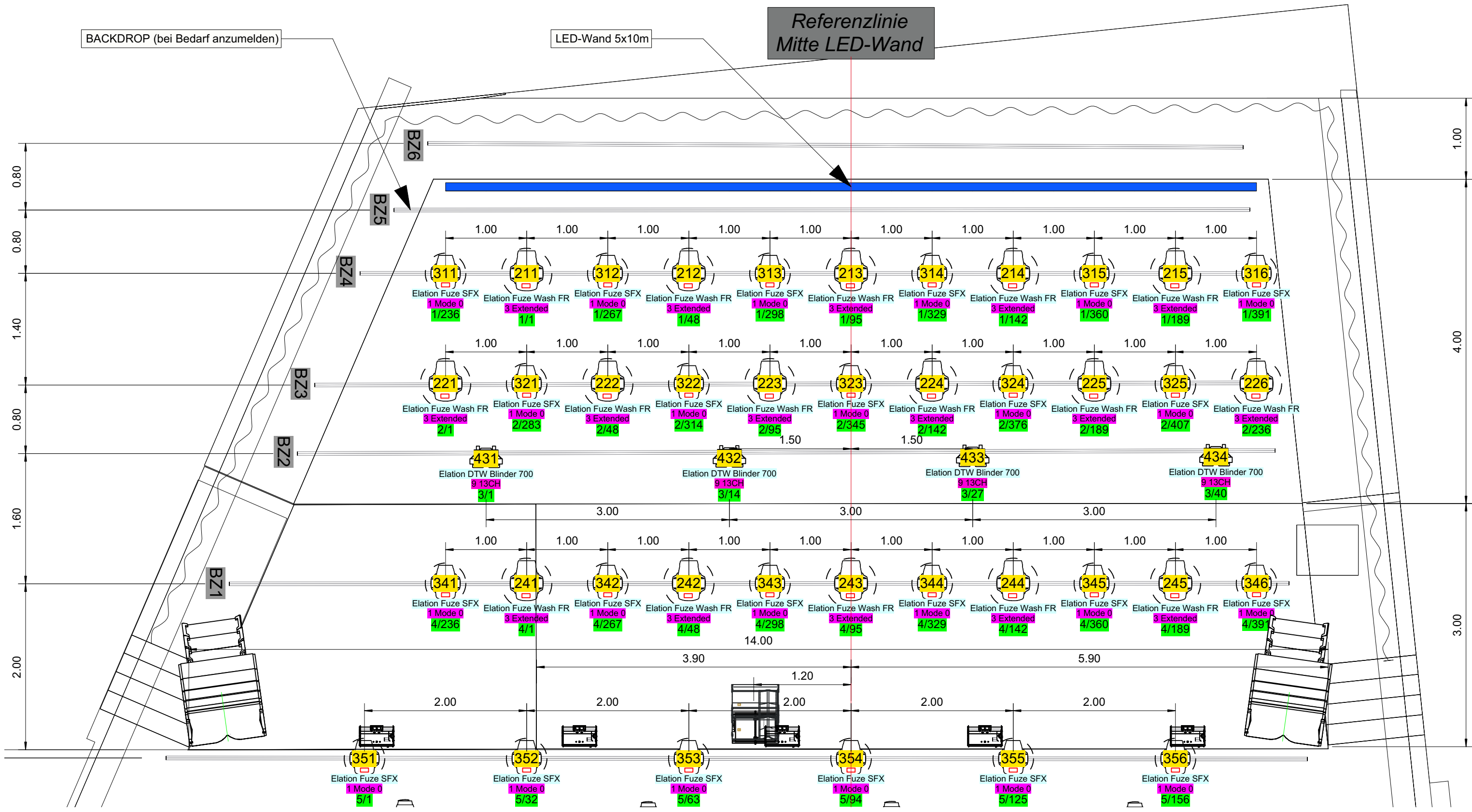
Lightplot ENTR A

ENTRA AG
 Obere Bahnhofstrasse 56
 8640 Rapperswil

info@entra-rapperswil.ch | +41 55 222 70 20

M 1:75

20.07.2023



ENTRA

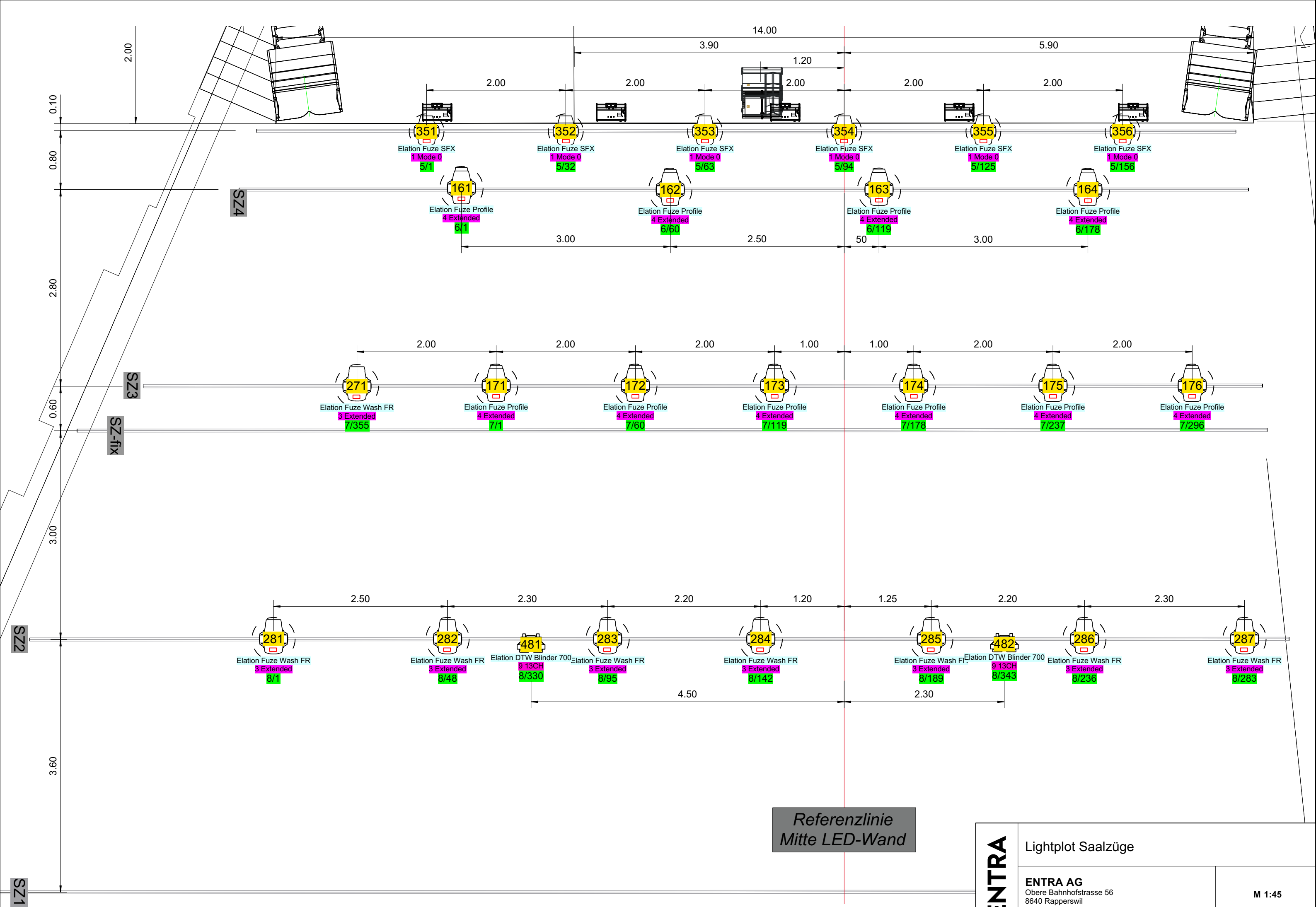
Lightplot Bühnenzüge

ENTRA AG
 Obere Bahnhofstrasse 56
 8640 Rapperswil

info@entra-rapperswil.ch | +41 55 222 70 20

M 1:45

20.07.2023



Referenzlinie
Mitte LED-Wand

ENTRA	Lightplot Saalzüge	
	ENTRA AG Obere Bahnhofstrasse 56 8640 Rapperswil info@entra-rapperswil.ch +41 55 222 70 20	
	M 1:45	20.07.2023